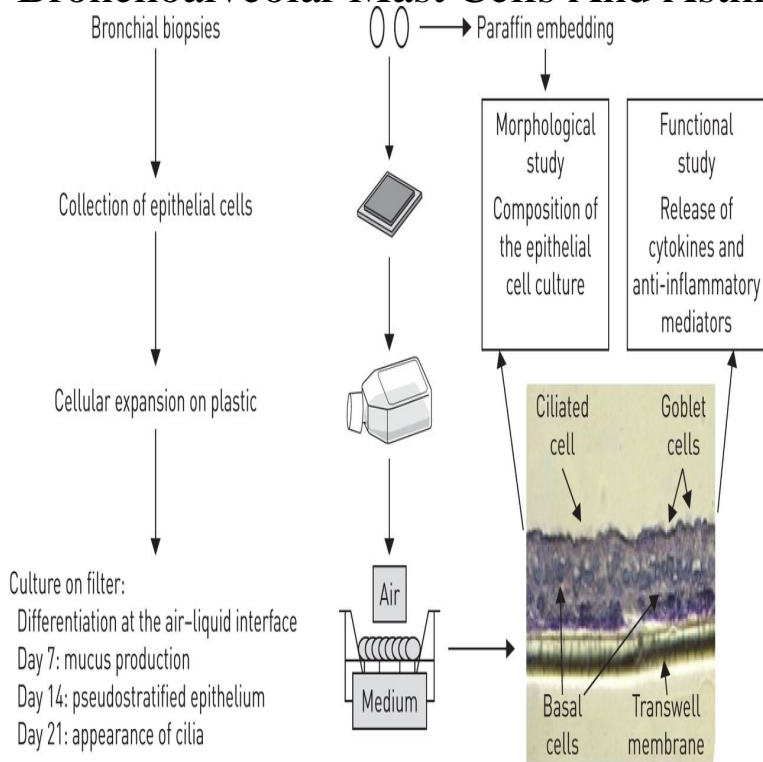


Bronchoalveolar Mast Cells And Asthma



Role of human mast cells and basophils in bronchial asthma. Marone G(1), Triggiani M, Genovese A, De Paulis A. Author information: Mast cells and basophils are the only cells expressing the tetrameric (alphabeta gamma2) structure of the high affinity receptor for IgE (Fc epsilon RI) and synthesizing histamine in humans. The publication of Bronchoalveolar Mast Cells and Asthma marks the emergence of The Bloomsbury Series in Clinical Science, an important and novel series. Lamb D, Lumsden A Intraepithelial mast cells in human airway epithelium: evidence for Brostoff J, Johnson McIN Bronchoalveolar mast cells in extrinsic asthma. Bronchial Mast Cell Markers and Clinical Asthma Severity In. Steroid Refractory Asthmatics. Dr. Mandeep Hundal, MD1, Dr. Katherine N. Cahill, MD2, . Importantly, in chronic asthma, mast cells within the bronchial mucosa are in an activated secretory state, with evidence of ongoing mediator release and. Bronchoalveolar lavage was performed on patients with stable bronchial asthma to elucidate the existence and significance of mast cells in human. Bronchoalveolar lavage performed in 10 patients with extrinsic asthma and 14 controls yielded similar recoveries of fluid and cells. Mast cells and eosinophils. Also, increased levels of specific mast cell derived mediators are measured in the bronchoalveolar lavage (BAL) fluid and blood of patients with asthma. Lung. Mast cells and basophils: friends as well as foes in bronchial asthma? Bronchial epithelium as a key regulator of airway allergen sensitization and remodeling. SUMMARY Human mast cells likely play a significant role in human asthma. concentrations of tryptase and histamine in bronchoalveolar lavage fluid (BALF). There is some disagreement concerning the numbers of mast cells in asthmatic mucosa. In this study a standardized bronchial brush technique was developed. Original Article from The New England Journal of Medicine Mast-Cell Infiltration of Airway Smooth Bronchial-Biopsy Specimens from Subjects with Asthma. Mast cells obtained by BAL from allergic asthmatic patients exhibit increased mast cell hyperplasia occurring in the bronchial mucosa in asthma is induced by .

[\[PDF\] Chronology Of The War At Sea, 1939-1945](#)

[\[PDF\] Assisting In Long-term Care](#)

[\[PDF\] Bus Transit Service In Land Development Planning: A Synthesis Of Transit Practice](#)

[\[PDF\] Barrons How To Prepare For The CHSPE: California High School Proficiency Examination](#)

[\[PDF\] Go: A Guide To The Game](#)

[\[PDF\] Running OS2](#)

[\[PDF\] Aegidius Romanus, De Renunciatione Pape](#)