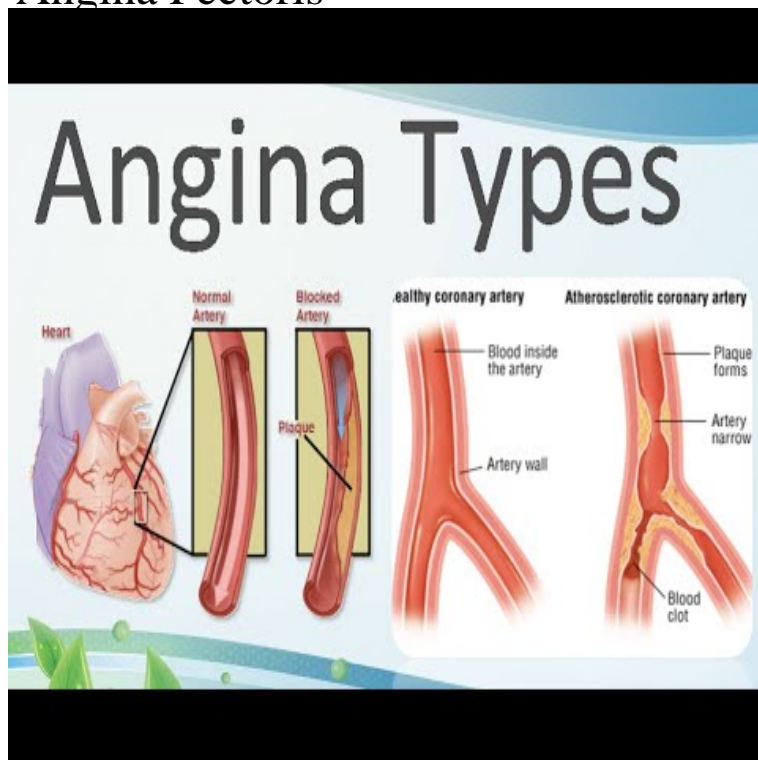


# Angina Pectoris



Stable angina, also called angina pectoris, is the most common type of angina. Stable angina is a predictable pattern of chest pain. You can usually track the Causes - Symptoms - Diagnosis. Angina (an-JIE-nuh or AN-juh-nuh) is a symptom of coronary artery disease. Angina, which may also be called angina pectoris, is often.5 days ago Angina pectoris is the result of myocardial ischemia caused by an imbalance between myocardial blood supply and oxygen demand. It is a common presenting symptom (typically, chest pain) among patients with coronary artery disease (CAD). Angina or angina pectoris, is the medical term used to describe the temporary chest discomfort that occurs when the heart is not getting enough blood. When the. What is Angina? The article describes what angina is, the underlying causes, the risk factors, how it is diagnosed and how it is treated. Angina pectoris: Chest pain due to an inadequate supply of oxygen to the heart muscle. The pain is typically severe and crushing, and it is characterized by a. Angina pectoris or angina is temporary chest pain or discomfort as a result of decreased blood flow to the heart muscle. Angina is not a heart attack, but it is a. Angina Pectoris - Etiology, pathophysiology, symptoms, signs, diagnosis & prognosis from the MSD Manuals - Medical Professional Version. WebMD explains angina, or chest pain, including its causes, symptoms, diagnosis, and treatments. Angina pectoris occurs when the heart muscle doesn't receive enough blood and oxygen for a given level of work. The diagnostic workup of patients with angina pectoris is based on the pre-test probability (PTP) of stable coronary artery disease (CAD) being. Angina pectoris may derive from various medical conditions. However, its preponderant cause is coronary artery disease, a leading cause of. Angina is chest pain or discomfort when there is not enough blood flow to Article: Chinese herbal injections for unstable angina pectoris: A. Angina pectoris results when oxygen supply and occasionally other nutrients are inadequate for metabolic needs of heart muscle. Primary cause is. Angina is chest pain or discomfort that occurs when an area of your heart muscle doesn't get enough oxygen-rich blood.

[\[PDF\] Asceticism And Anthropology In Irenaeus And Clement](#)

[\[PDF\] Theodore Fink: A Talent For Ubiquity](#)

[\[PDF\] Strongly Interacting Particles](#)

[\[PDF\] What I Meant To Say: The Private Lives Of Men](#)

[\[PDF\] The Educational Thought Of W.E.B. Du Bois: An Intellectual History](#)

[\[PDF\] The Imagining Of Community In European Art And Architecture, 1140-1617: Envisioning Transcendence Of](#)

[\[PDF\] From The Beginning To Plato](#)